

DALIAN HIVOLT POWER SYSTEM CO.,LTD.

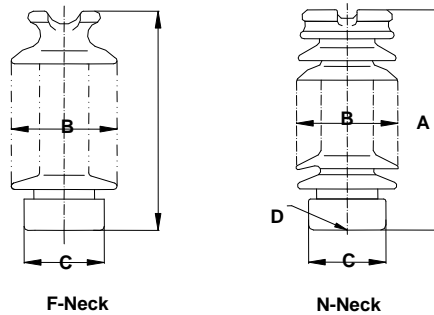
LINE POST INSULATORS

CAT. NO.2015

www.hivoltinsulators.com



ANSI CLASS LINE POST INSULATOR (ANSI 57 SERIES)

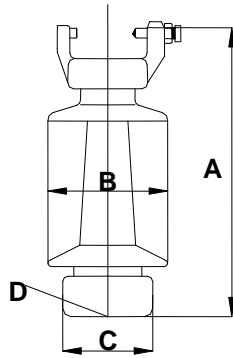


STANDARD TECHNICAL CHARACTERISTICS

Cat. No.	0301020	0301025	0301035	0301045	0301055	0301066	0301088		
Usual line voltage/kV	20	25	35	45	55	69	88		
ANSI Class	—	57-1	57-2	57-3	57-4	57-5	57-6		
Designation of Neck	F	F	F	F	N	F or N	N		
Height "A"/in(mm)	7-1/2 (191)	8-3/4 (222)	12 (305)	15 (381)	17 (432)	20 (508)	23 (584)		
Diameter "B"/in(mm)	5-1/2 (140)	5-3/4 (146)	5-3/4 (146)	6.5 (165)	7 (178)	7 (192)	7-5/16 (185)		
Diameter "C" /in(mm)	3-3/4 (95)	4 (102)	4 (102)	4-1/2 (114)	5 (127)	5 (130)	5-1/2 (140)		
Thread "D" /in(mm)	3/4-10 UNC	3/4-10 UNC	3/4-10 UNC	3/4-10 UNC	3/4-10 UNC	3/4-10 UNC	7/8-9 UNC		
Min. leakage distance/in(mm)	11 (280)	14 (356)	22 (559)	29 (737)	40 (1015)	45 (1143)	53 (1345)		
Dry arcing distance/in(mm)	5-3/4 (146)	6-1/2 (165)	9-1/2 (241)	12-1/4 (311)	14-1/2 (368)	17-1/4 (438)	19-1/4 (489)		
Cantilever strength/lb(kN)	2000 (9)	2800 (12.5)	2800 (12.5)	2800 (12.5)	2800 (12.5)	2800 (12.5)	2800 (12.5)		
Average flashover voltage	Low Frequency	Dry/kV	80	80	110	125	150	160	200
		Wet/kV	55	60	85	95	125	130	170
	Critical Impulse	Pos. /kV	105	130	180	200	255	265	330
		Neg. /kV	130	155	205	260	340	380	425
Withstand voltage	Low frequency	Dry/kV	60	60	90	100	120	140	160
		Wet/kV	40	45	65	80	100	120	135
	Impulse/kV	85	110	150	170	200	235	250	
Radio influence voltage data	Test voltage/kV	15	15	22	30	44	44	44	
	Max. RIV at 1,000kHz/uV	50	100	100	200	200	200	200	
Net weight/lb(kg)	8.5 (3.9)	11 (5)	17 (7.7)	22 (10)	36 (16)	46 (21)	51 (23)		



ANSI CLASS LINE POST INSULATOR (ANSI 57 SERIES)

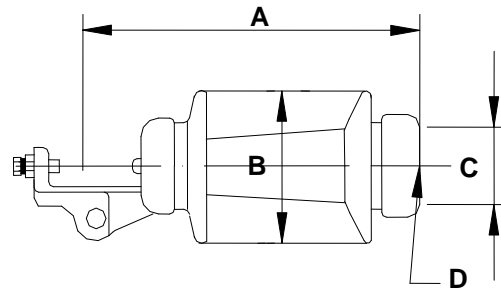


STANDARD TECHNICAL CHARACTERISTICS

Cat. No.	0301025-01	0301035-01	0301045-01	0301055-01	0301066-01	0301088-01		
Usual line voltage/kV	25	35	45	55	66	88		
ANSI Class	57-11	57-12	57-13	57-14	57-15	57-16		
Height" A"/in(mm)	10-5/8 (270)	13-3/4 (349)	16-1/2 (419)	19 (483)	21-5/8 (549)	24-1/4 (616)		
Diameter "B"/in(mm)	5-3/4 (146)	6 (152)	6 (152)	6-3/4 (172)	7-1/4 (185)	7-1/4 (185)		
Diameter "C" /in(mm)	4 (102)	4-1/2 (114)	4-1/2 (114)	5 (127)	5-1/2 (140)	5-1/2 (140)		
Thread "D" /in(mm)	3/4-10 UNC	3/4-10 UNC	3/4-10 UNC	3/4-10 UNC	3/4-10 UNC	7/8-9 UNC		
Min. leakage distance/in(mm)	14 (356)	22 (559)	29 (737)	40 (1015)	45 (1143)	53 (1346)		
Dry arcing distance/in(mm)	6-1/2 (165)	9-1/2 (241)	12-1/4 (311)	14-1/2 (368)	17-1/4 (438)	19-1/4 (489)		
Cantilever strength/lb(kN)	2800 (12.5)	2800 (12.5)	2800 (12.5)	2800 (12.5)	2800 (12.5)	2800 (12.5)		
Average flashover voltage	Low Frequency	Dry/kV	80	110	125	150	175	200
		Wet/kV	60	85	100	125	150	170
	Critical Impulse	Pos. /kV	130	180	210	255	290	330
		Neg. /kV	155	205	260	340	380	425
Withstand voltage	Low frequency	Dry/kV	60	90	100	120	140	160
		Wet/kV	45	65	80	100	120	135
	Impulse/kV	110	150	170	200	235	250	
Radio influence voltage data	Test voltage/kV		15	22	30	44	44	44
	Max. RIV at 1,000kHz/uV		100	100	200	200	200	200
Net weight/lb(kg)			15 (6.8)	22 (10)	26 (11.8)	35 (15.9)	41 (18.6)	50 (22.7)



ANSI CLASS LINE POST INSULATOR (ANSI 57 SERIES)



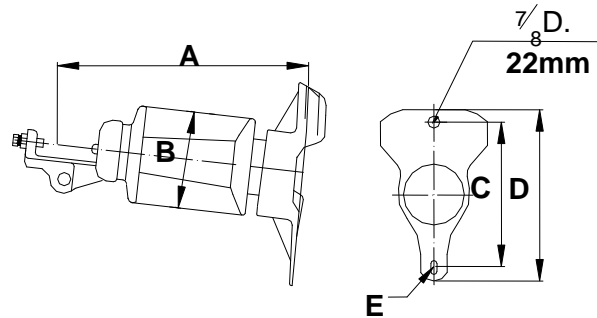
STANDARD TECHNICAL CHARACTERISTICS

Cat. No.	0301020-01	0301025-02	0301035-02	0301045-02	0301055-02	0301066-02	0301088-02		
Usual line voltage/kV	20	25	35	45	55	66	88		
ANSI Class	-	57-21	57-22	57-23	57-24	57-25	57-26		
Height" A"/in(mm)	10 (254)	11-3/8 (289)	14-1/2 (368)	17-1/4 (438)	19-3/4 (502)	22-1/2 (572)	25 (635)		
Diameter "B"/in(mm)	5-1/2 (140)	5-3/4 (146)	6 (152)	6 (152)	6-3/4 (172)	7-3/4 (195)	7-1/4 (185)		
Diameter "C" /in(mm)	4 (102)	4 (102)	4-1/2 (114)	4-1/2 (114)	5 (127)	5-1/2 (140)	5-1/2 (140)		
Thread "D" /in(mm)	3/4-10 UNC	3/4-10 UNC	3/4-10 UNC	3/4-10 UNC	3/4-10 UNC	3/4-10 UNC	7/8-9 UNC		
Min. leakage distance/in(mm)	10 (254)	14 (356)	22 (559)	29 (737)	40 (1015)	45 (1143)	53 (1345)		
Dry arcing distance/in(mm)	5 (127)	6-1/2 (165)	9-1/2 (241)	12-1/4 (311)	14-1/2 (368)	17-1/4 (438)	19-1/4 (489)		
Cantilever strength/lb(kN)	2800 (12.5)	2800 (12.5)	2800 (12.5)	2800 (12.5)	2800 (12.5)	2800 (12.5)	2800 (12.5)		
Average flashover voltage	Low Frequency	Dry/kV	70	80	110	125	150	200	
		Wet/kV	65	70	100	115	135	180	
	Critical Impulse	Pos. /kV	100	130	180	210	255	330	
		Neg. /kV	125	155	205	260	340	425	
Withstand voltage	Low frequency	Dry/kV	55	60	90	100	120	160	
		Wet/kV	50	55	80	90	110	145	
	Impulse/kV	80	110	150	170	200	235	250	
Radio influence voltage data	Test voltage/kV		15	15	22	30	44	44	
	Max. RIV at 1,000kHz/uV		50	100	100	200	200	200	
Net weight/lb(kg)			13 (5.9)	16 (7.3)	22 (10)	28 (12.7)	36 (16.4)	42 (19.1)	52 (23.6)



ANSI CLASS LINE POST INSULATOR (ANSI 57 SERIES)

[Horizontal Mounting Clamp-top Type With Curved Base]



STANDARD TECHNICAL CHARACTERISTICS

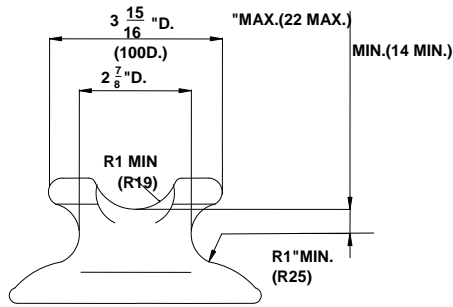
Cat. No.	0301020-0	0301025-0	0301035-0	0301045-0	0301055-03	0301066-0	0301088-0	
	2	3	3	3	3	3	3	
Usual line voltage/kV	20	25	35	45	55	66	88	
ANSI Class	-	57-31	57-32	57-33	57-34	57-35	57-36	
Height "A" /in(mm)	10-3/8 (264)	11-3/4 (298)	14-7/8 (378)	17-5/8 (448)	19-3/4 (502)	22-3/8 (568)	25 (635)	
Diameter "B" /in(mm)	5-1/2 (140)	5-3/4 (146)	6 (152)	6 (152)	6-3/4 (172)	6-3/4 (172)	7-1/4 (185)	
Length "C" /in(mm)	10 (254)	10 (254)	10 (254)	10 (254)	10 (254)	12 (305)	12 (305)	
Length "D" /in(mm)	12 (305)	12 (305)	12 (305)	12 (305)	12 (305)	14 (356)	14 (356)	
Slot Hole "E" /in(mm)	7/8x1-1/8 (22x29)	7/8x1-1/8 (22x29)	7/8x1-1/8 (22x29)	7/8x1-1/8 (22x29)	7/8x1-15/16 (22x24)	7/8x1-3/16 (22x30)	7/8x1-1/8 (22x29)	
Min. leakage distance/in(mm)	10(254)	14(356)	22(559)	29(737)	40(1015)	45(1145)	53(1345)	
Dry arcing distance/in(mm)	5 (127)	6-1/2 (165)	9-1/2 (241)	12-1/4 (311)	14-1/2 (368)	17-1/4 (438)	19-1/4 (489)	
Cantilever strength/lb(kN)	2800 (12.5)	2800 (12.5)	2800 (12.5)	2800 (12.5)	2800 (12.5)	2800 (12.5)	2800 (12.5)	
Average flashover voltage	Low Frequency	Dry/kV	70	80	110	125	150	200
		Wet/kV	65	70	100	115	135	160
	Critical Impulse	Pos. /kV	100	130	180	210	255	290
		Neg. /kV	125	155	205	260	340	380
Withstand voltage	Low frequency	Dry/kV	55	60	90	100	120	140
		Wet/kV	50	55	80	90	110	130
	Impulse/kV	80	110	150	170	200	235	250
Radio influence voltage data	Test voltage/kV		15	15	22	30	44	44
	Max. RIV at 1,000kHz/uV		50	100	100	200	200	200
Net weight/lb(kg)		18(8.2)	20(9.1)	26(11.8)	32(14.6)	42(19.1)	54(24.5)	61(27.7)



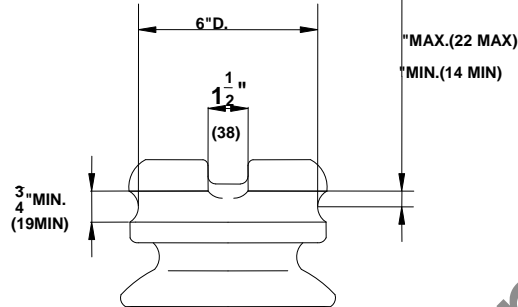
ANSI CLASS LINE POST INSULATOR (ANSI 57 SERIES)

[Details of Top and Base]

Tie-Top Type

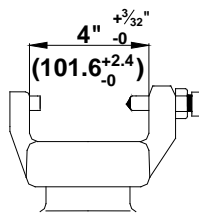


F-neck
 Top & side wire groove with diameter 1-15/16 inch (49.2mm)

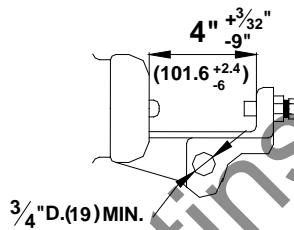


N-neck
 Top & side wire groove with diameter 1-7/16 inch (36.5mm)

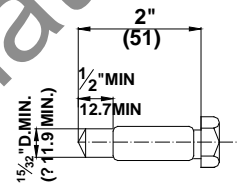
Vertical-Clamp



Clamp-Top Type Horizontal-Clamp

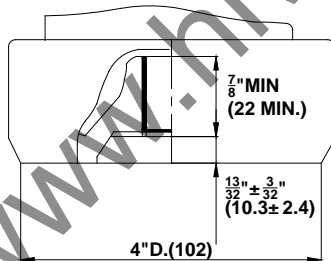


Trunnion Bolt

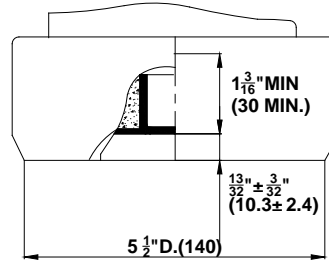


Base recess

3/4-10UNC (PD0.7077"-0.7000")



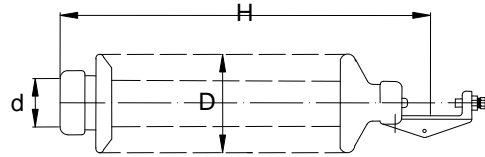
7/8-9UNC (PD0.8260"-0.8178")





IEC CLASS LINE POST INSULATOR

[Horizontal Clamp Type]

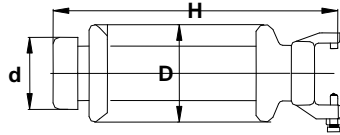


STANDARD TECHNICAL CHARACTERISTICS

IEC Class	Lightning Impulse Withstand Voltage (KV)	Power Freq. Wet Withstand Voltage (kV)	Creepage (mm)	Dia of Bottom Fitting d (mm)	End Bolt	H/D (mm)
R8 ET75L	75	28	250	90	M20	190/140
R8 JT75L						
R8 ET95L	95	38	350	90	M20	222/145
R8 JT95L						
R8 ET125L	125	50	530	90	M20	305/150
R8 JT125L						
R8 ET170L	170	70	720	90	M20	370/160
R8 JT170L						
R12.5 ET125N	125	50	400	100	M20	305/160
R12.5 JT125N						
R12.5 ET170N	170	70	580	110	M20	370/170
R12.5 JT170N						
R12.5 ET200N	200	85	620	120	M20	430/180
R12.5 JT200N						
R12.5 ET250N	250	95	860	120	M20	510/190
R12.5 JT250N						
R12.5 ET325N	325	140	1200	140	M24	660/200
R12.5 JT325N						
R12.5 ET75L	75	28	250	90	M20	190/160
R12.5 JT75L						
R12.5 ET95L	95	38	350	100	M20	222/165
R12.5 JT95L						
R12.5 ET125L	125	50	530	100	M20	305/170
R12.5 JT125L						
R12.5 ET170L	170	70	720	110	M20	370/180
R12.5 JT170L						
R12.5 ET200L	200	85	900	120	M20	430/190
R12.5 JT200L						
R12.5 ET250L	250	95	1140	120	M20	510/200
R12.5 JT250L						
R12.5 ET325L	325	140	1450	140	M24	660/210
R12.5 JT325L						



IEC CLASS LINE POST INSULATOR
[Vertical Clamp Type]



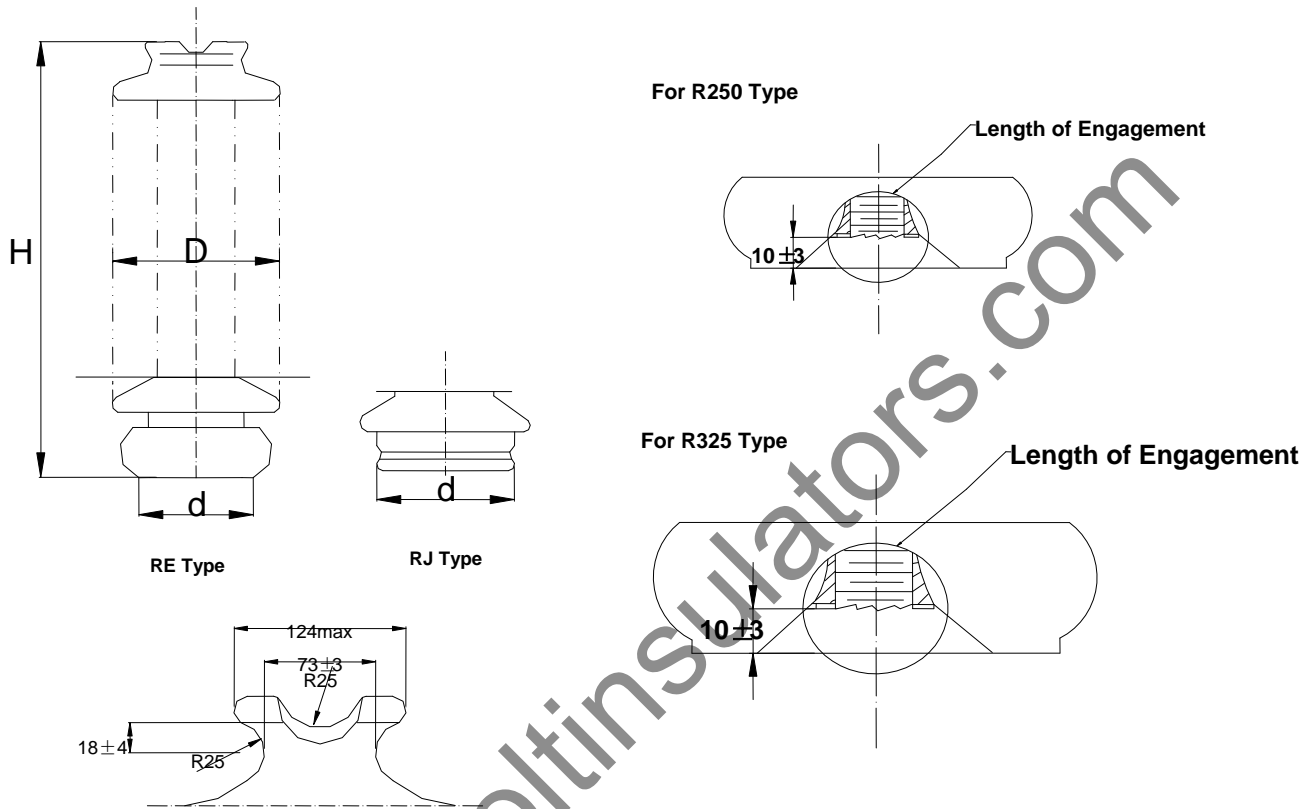
STANDARD TECHNICAL CHARACTERISTICS

IEC Class	Lightning Impulse Withstand Voltage (KV)	Power Freq. Wet Withstand Voltage (kV)	Min. Creepage Distance (mm)	H (mm)	Dimension d (mm)	Bolt End	Max. Shed dia.D (mm)
R12.5EC125N	125	50	400	350	100	M20	160
R12.5EH125N				370			
R12.5EC170N	170	70	580	420	110	M20	170
R12.5EH170N				440			
R12.5EC200N	200	85	620	495	120	M20	180
R12.5EH200N				515			
R12.5EC250N	250	95	860	570	120	M20	190
R12.5EH250N				590			
R12.5EC325N	325	140	1200	710	140	M24	200
R12.5EH325N				730			
R12.5EC75L	75	28	250	235	90	M20	160
R12.5EH75L				255			
R12.5EC95L	95	38	350	270	100	M20	165
R12.5EH95L				290			
R12.5EC125L	125	50	530	350	100	M20	170
R12.5EH125L				370			
R12.5EC170L	170	70	720	420	110	M20	180
R12.5EH170L				440			
R12.5EC200L	200	85	900	495	120	M20	190
R12.5EH200L				515			
R12.5EC250L	250	95	1140	570	120	M20	200
R12.5EH250L				590			
R12.5EC325L	325	140	1450	710	140	M24	210
R12.5EH325L				730			



IEC CLASS LINE POST INSULATOR

[Details of Tie-Top & Bottom Cap Threads]



www.hivoltinsulators.com